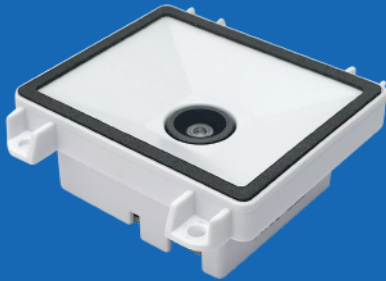


# MINDEO



1D 2D

FC CE RoHS



## MP150 Embedded Image Platform

### Features

- 1 Super large Field of View, and Slim Design
- 2 High resolution (1280×800) Megapixel image
- 3 Read all common 1D/2D barcodes from paper labels and electronic screens
- 4 Compatible with the physical interface and size of other brands' models
- 5 Support both image auto-induction trigger and serial trigger



## PHYSICAL CHARACTERISTICS

Dimensions	65.2mm x 61.2mm x 25.0mm
Weight	36 g (without cable)
Cable	Tapered 12-pin flex strip (12 × 0.5 mm), 9-pin flex strip (1.0mm), or 1.0m Micro USB cable
Connector Type	12-Pin FPC, or Micro USB, or 9-pin connector
Host System Interfaces	TTL-232, or USB HIB Keyboard, USB virtual COM
Indicator Interface	To control external Beeper and LED
Trigger Mode	Command, Auto-Detect
Programming Method	Scanning special barcodes in sequence, or sending commands
Firmware Upgrade	Online

## ELECTRICAL CHARACTERISTICS

Input Voltage	5.0 ±5% VDC
Current	Working: 185 mA ( Max: 350 mA)

## PERFORMANCE CHARACTERISTICS

Scan Pattern	Image	
Image Size	1280×800 pixels	
Light Source	White LED, 2700K	
Field of View	Horizontal: 140°, Vertical: 99°	
Scanning Angles	±58°, ±65°, 360°(skew, pitch, roll)	
Print Contrast	20% minimum reflectance difference	
Decoding Capability	All common 1D/2D paper barcodes and mobile barcodes	
Minimum Resolution	10 mil	
Decoding Depth	10mil Code 39 ( 3 chars )	10 - 70 mm
	13mil UPC ( 6 chars )	0 - 80 mm
	10mil QR ( 20 chars )	5 - 40 mm
	20mil QR ( 20 chars )	0 - 105 mm
	WeChat payment code (iPhone 6 PLUS)	0 - 240 mm

## ENVIRONMENTAL CHARACTERISTICS

Temperature	Operating: -20°C to 60°C (-4°F to 140°F); Storage: -40°C to 70°C (-40°F to 158°F)
Humidity	5% to 95% (non-condensing)
Mechanical Vibration	IEC60068-2-6: Un-powered engine withstands a random vibration along each of the X, Y and Z axes for a period of one hour per axis, define as follows:
	20 to 80 Hz Ramp up to 0.04 G2/Hz at the rate of 3 dB/oct
	80 to 350 Hz 0.04G2/Hz
	350 to 2000 Hz Ramp down at the rate of 3 dB/oct
Mechanical Shock	IEC60068-2-27 : Shock pulse: 0.5 ms; Maximal acceleration: 1500 G; Shock direction : ±X-axis, ±Y-axis, ±Z-axis, 3 times for each direction (total 18 times)
Safety	Photobiological Safety: EN62479:2018
	EMC: EN55032
	ESD Protection: EN55024
	RF Immunity: IEC61000-4-3, 10 V/m Artificial light Immunity: 100,000 lux

[Notice]: Specifications are subject to change without notice.

